

Penta Career Center

Perrysburg, Ohio

The new 522,000 sq. ft. Penta Career Educational Center is built to serve 16 school districts from five counties in Northwest Ohio, accommodating grades 11 and 12. Visible from Interstate 75, the facility covers 65 acres of the 144 acre parcel, and ranges from a single story to three stories. Final project cost was \$85 million.

The exterior facade consists of 10" thick insulated (3", 2", 5") brick clad precast panels that provide a durable, functional, energy efficient and aesthetically pleasing finish to the facility. In the high bays at the automotive technology center, the back face of the panels serve as the painted interior walls. The 743 architectural precast concrete panels typically weighed 30,500 lbs. each, and measured 10'-2" x 30'-0" x 10". The panels combine integrally cast thin brick and acid etching to simulate a limestone appearance.

"We are extremely pleased with the precast panels used in the construction of our new school. Not only were we able to complete the project more quickly, the look and the quality of the precast exceeded our expectations. The quality manufacturing process and installation provided a time-saving, cost-efficient, aesthetically pleasing alternative to traditional masonry construction."

*-Fred Susor, Superintendent
Penta Career Center*

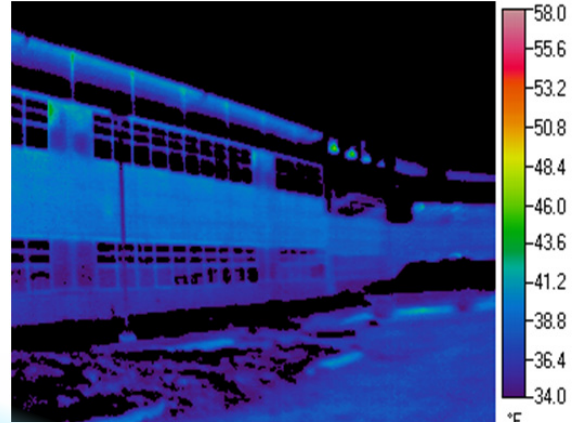


National Precast, Inc.
(586)294-6430

**National Precast
Structural, Inc.**
(586)247-1813



www.nationalprecast.com



(photo above) Thermographic imaging displays the excellent energy efficiency performance using insulated precast wall panels with edge-to-edge insulation.

(photo left) Shows the thermographic imaged walls during the daytime.



Architects: TMP Associates and The Collaborative, Inc. Engineer: LKL Engineering